

AECOM

Innovating Equity

Better Tools
Better Engagement
Better Analysis
Better Outcomes

AECOM Overview

EMERGING, INTEGRATED FEDERAL PLANNING REQUIREMENTS – Equity/Environmental Justice

Starting his first days in office with Executive Orders 13985, 13990, and 14008, President Biden has been clear on his environmental priorities, and how his Administration plans to develop projects that optimize the triple bottom line – **Environment, Social, and Economic** – including robust equity community engagement and meaningful equity impact analyses in all Federal government undertakings – to “**Build Back Better.**” The Administration defines equity communities broadly, inclusive of all historically under-represented groups, including people of color, the rural poor, and Native Americans.

AECOM brings to each project a complete, diverse, and interdisciplinary team of experts to holistically analyze potential environmental and social consequences, actively engage all stakeholders, and ensure the project’s effects to equity communities are fully integrated into the planning process, resulting in maximum positive effects.

AECOM draws upon our 47,000+ globally networked professionals to bring our Clients globally tested innovations, including digital equity analytical tools. Goaled on “Delivering a better world,” AECOM provides innovative solutions that help our clients plan and build smart, resilient projects that benefit **all** citizens – truly achieving optimal triple bottom line outcomes.

Industry leaders at all levels have embraced the direction being established by the federal government. A comprehensive approach to equity is emerging in the procurement process and during project delivery. New roles and performance criteria are being established by a new set of leaders with a new vision of equity.



Equity Analyses: Environmental Justice



Parent Academy Participants with their Certificates of Completion

[Read more about the Dunbarton Bridge West Project](#)

[Read more about EJScreen](#)

AECOM's Equity Engagement and Analytical Approach:

1. Increased involvement of typically underrepresented participants through customized communications and innovative techniques
2. Deeper analysis of a full range of disproportionate effects based on project-level and systemwide considerations and community concerns
3. More comprehensive and interconnected assessments of other aspects of equity: disadvantaged business enterprise involvement levels and mentoring, hiring practices, economic and community development programs, and sensitivity training.

Equity Analyses: Advanced Equity Analytical Software and Dashboards



EQUITY DASHBOARD

Project Name: SC 1008 Low Level Sewershed Inflow and Infiltration Reduction = Project 01

UID: BALT0089

PROJECT IMPACT AREA: Project Limit

PROGRAM: Wastewater

ACRES: 606

Equity Concept

Equity Score

Environment: 7 / 10

Social: 6 / 10

Economic: 10 / 10

Project Implementation: 6.2 / 10

Equity Dimensions

Who Benefits?

Project Area Race and Income Zones

7.6% Project Area

Population: 13,103

Equity Map

Area Needs

Select attributes to view on map

[Read more about the Baltimore Public Works project here](#)

AECOM has developed innovative tools and methodologies that enable clients and organizations to comprehensively integrate equity considerations into their planning and decision processes.

Equity Analyses: Digital NEPA and GIS-based Analysis



Consultation with Federally Recognized Native American Tribes

Treasury is consulting with seven federally recognized Native American Tribes determined to have ancestral ties to the ROI pursuant to 40 CFR 1501.7(a)(1); NEPA; and the Native American Graves Protection and Repatriation Act (NAGPRA). Treasury invited these Tribes to participate in the NEPA and NHPA Section 106 processes as Sovereign Nations per EO 13175 (Consultation and Coordination with Indian Tribal Governments).

These Tribes include the:

- Delaware Nation, Oklahoma
- Delaware Tribe of Indians
- Seneca-Cayuga Nation, New York
- Oneida Nation of New York
- Onondaga Nation, New York
- St. Regis Mohawk Tribe, New York (formerly the St. Regis Band of Mohawk Indians of New York)
- Tuscarora Nation of New York

Treasury sent letters to these Tribes to initiate consultation in November 2019 and January 2020, provided Tribes with the Draft Phase I Archaeological Surveys in January 2020 and September 2020, and provided Tribes with the Draft Phase II Archaeological Evaluation and overall determination of effect for the Proposed Action on historic properties in October 2020.

Treasury will continue to consult with these Tribes throughout the NEPA and NHPA Section 106 processes. A record of related written communication with Tribes is presented [here](#).

Do you want more information?
More information can be found [here](#).

Public Participation

Check out this visually rich digital EIS for yourself!

More and Better Online - Requires More and Better Offline: Online tools and techniques are rapidly changing and improving the public's ability to engage with project information. These improvements must be balanced by other effective methods (traditional and innovative) to engage people with limited or no Internet accessibility or skills (during and after the need for social distancing policies).

Equity Analyses: Disaster Recovery



[Read more about Meadowlands here](#)

Equity Analyses: Virtual Stakeholder Engagement

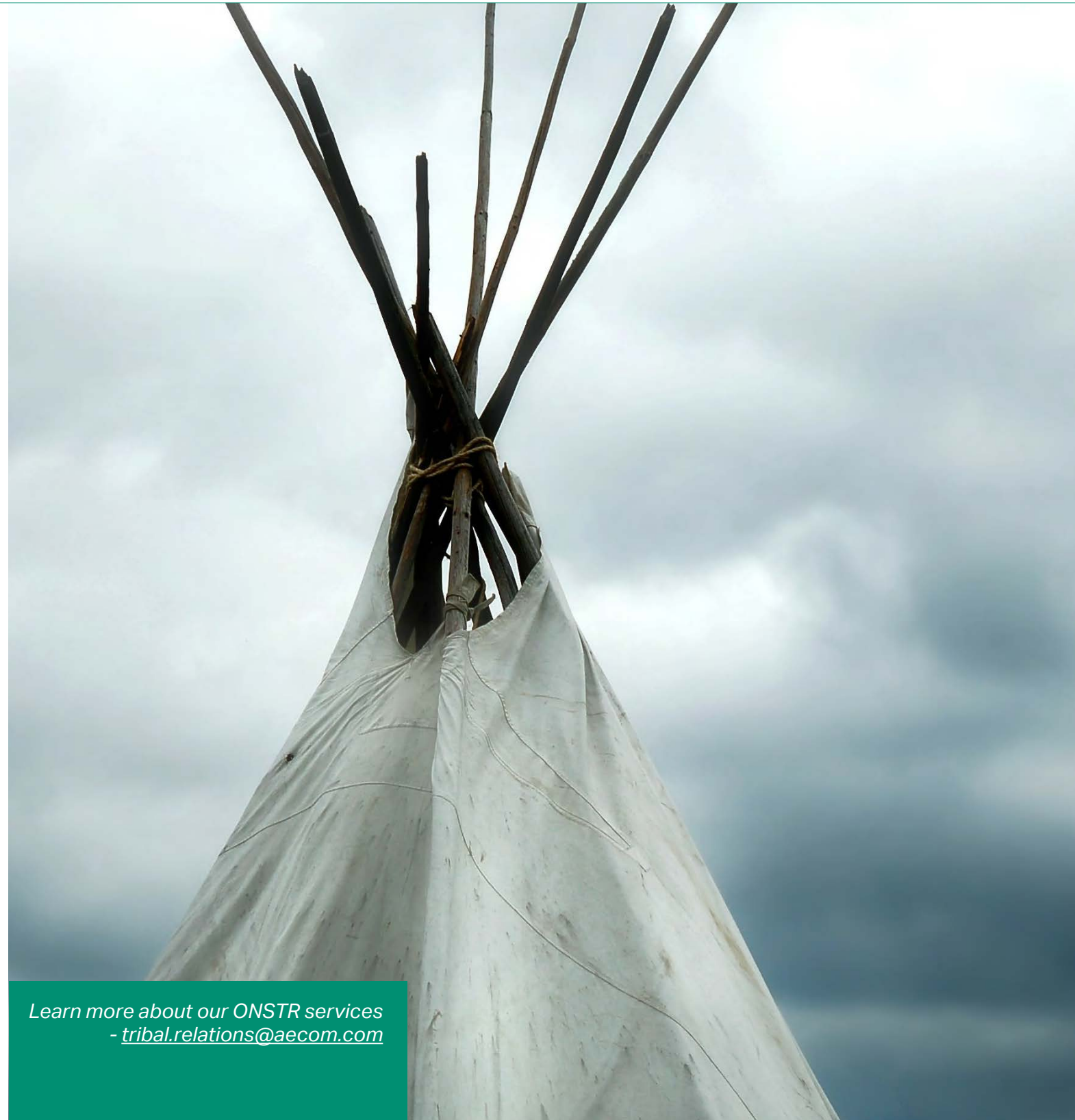


[Check out the Fort Lauderdale Park Virtual Room](#)

Equity Analyses: Gender-Based Analysis Plus



Indigenous Peoples: AECOM's Office of Native Sovereign and Tribal Relations (ONSTR)



Learn more about our ONSTR services
- tribal.relations@aecom.com

Indigenous Peoples: Blooming New Graduate Program

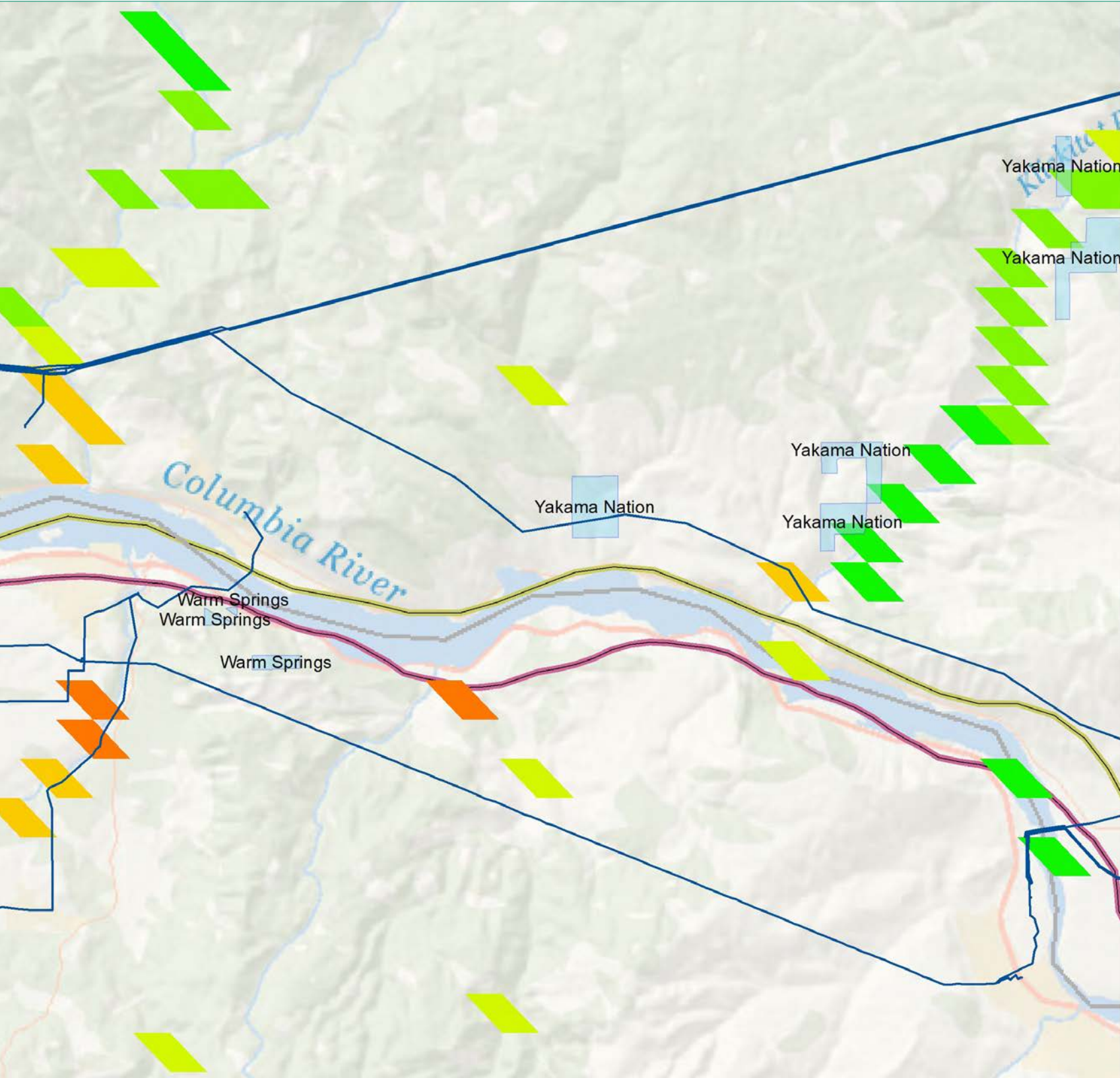


Indigenous Peoples: Tribal Infrastructure Capacity Building

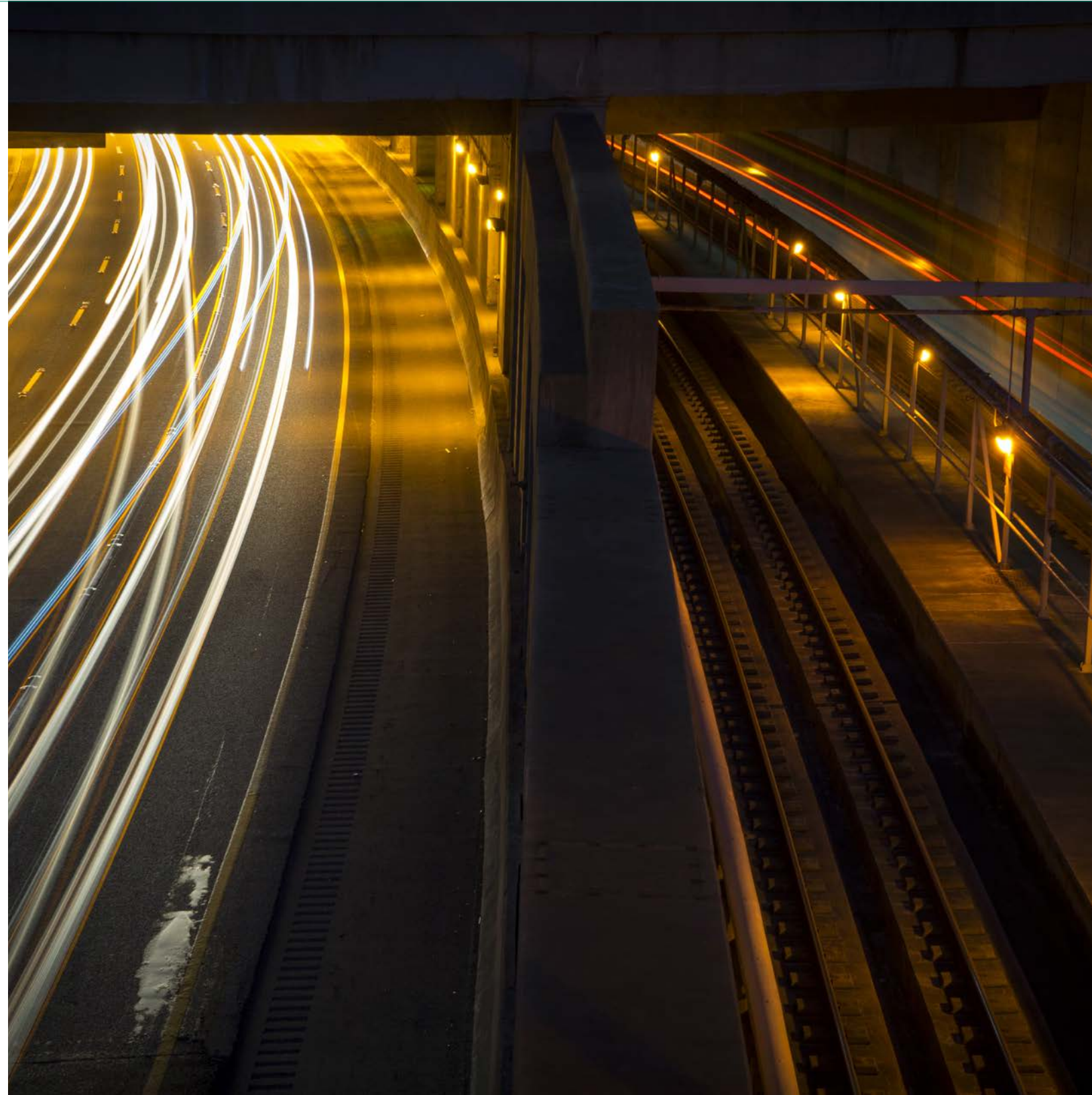


[Read more about Henvey Inlet Wind Project](#)

Indigenous Peoples: AECOM's Suitability for Action Viable Engagement (SAVE) Model



Transportation: Equity Housing and Transit Analyses

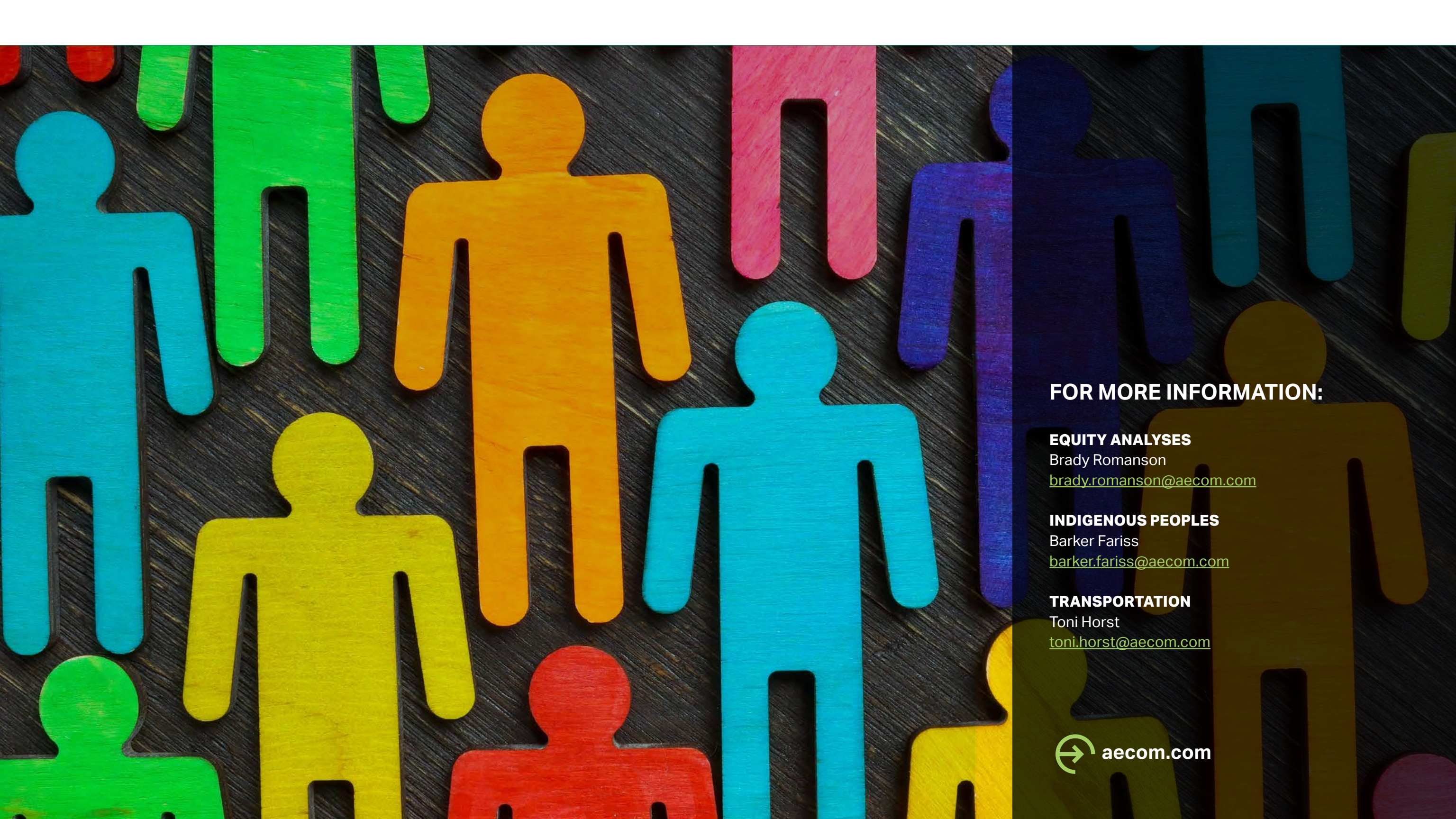


Transportation: Opportunity Indices



Transportation: Equity and Economic Revitalization through Smarter Metropolitan Projects





FOR MORE INFORMATION:

EQUITY ANALYSES

Brady Romanson

brady.romanson@aecom.com

INDIGENOUS PEOPLES

Barker Fariss

barker.fariss@aecom.com

TRANSPORTATION

Toni Horst

toni.horst@aecom.com

